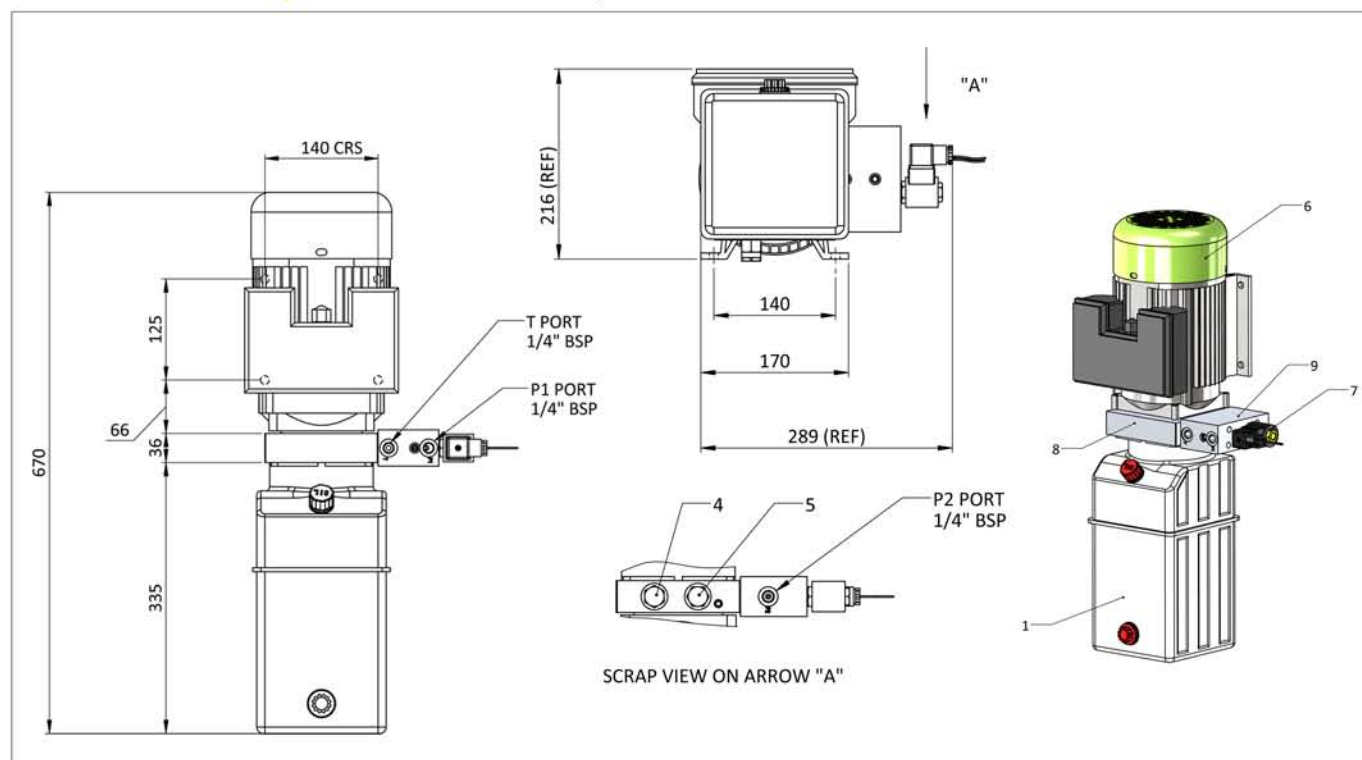
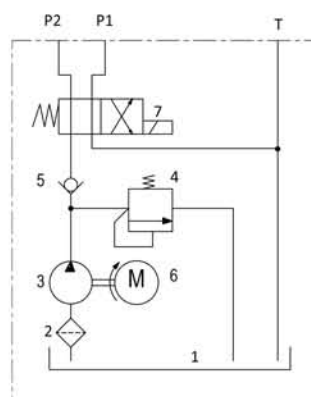


POWER PACKS

Tower Lift Pack / YBZ5-F2.1C18G3/GBVBH1



Electric Motor: 1Ph 1.5Kw 1450rpm
 Gear Pump: 2.1 cc/rev
 Oil Tank: 6L plastic vertical mount
 Pressure Relief: 180 bar



The tower lift pack is designed to control power to two independent hydraulic circuits preventing any possibility of operator error. The stabilizer rams are deployed via a lever valve and only at this point can the tower be raised as the change over is interlocked. Again the stabiliser rams cannot be adjusted until the tower is lowered.

Please Note! All power packs should be wired by a qualified electrician. Please refer to wiring diagrams at the back of the power packs section.